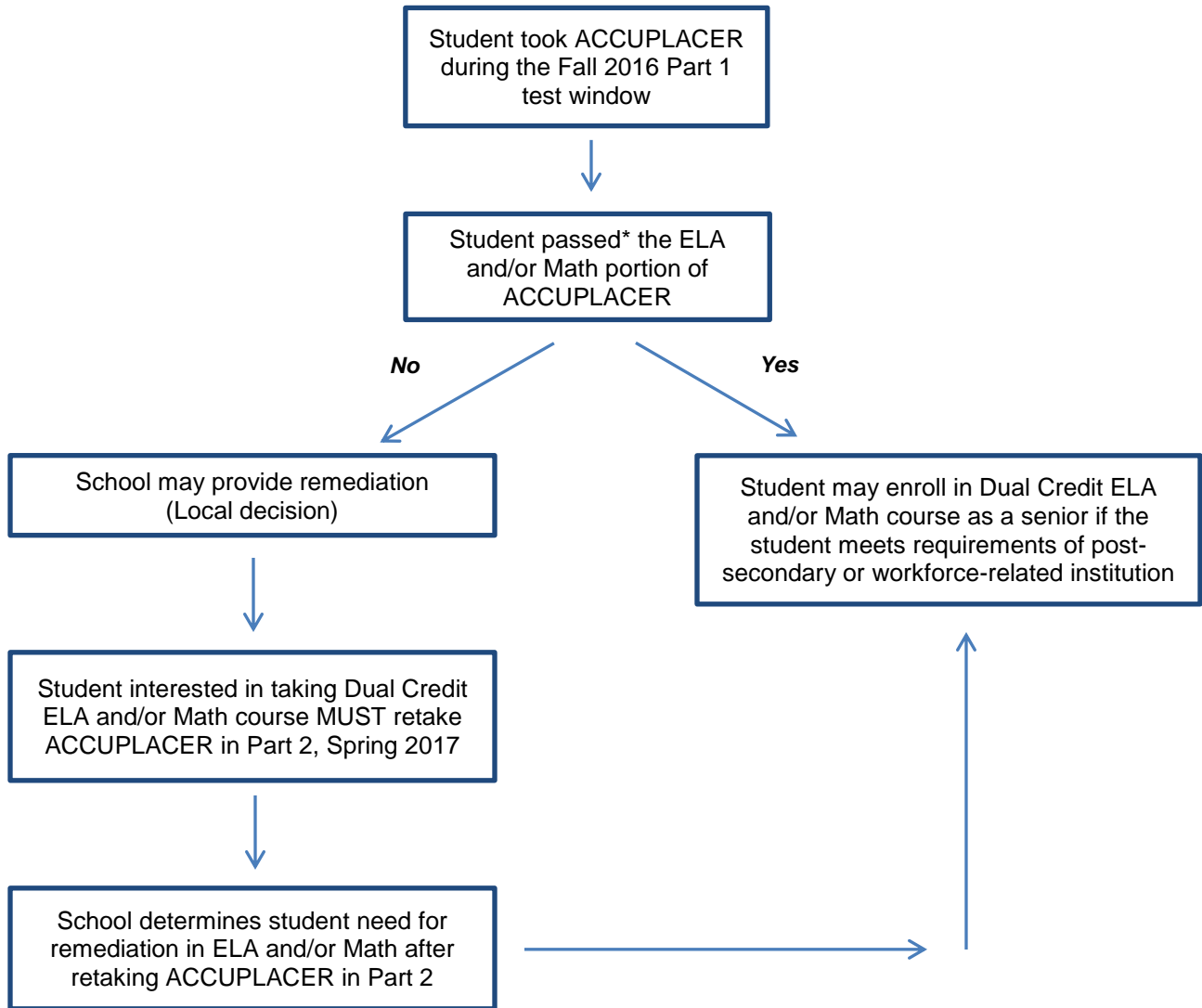


**ACCUPLACER Participation Criteria and Implementation Guidance
Grade 11 Students
Dual Credit-Related Information
Part 2 Administration: 2016-17**

For Juniors who 1) were required to participate in the ACCUPLACER Fall 2016 Part 1 test, and 2) want to enroll in a Dual Credit course in ELA or Math as a Senior



***ACCUPLACER Passing Score Requirements:**

ELA

ACCUPLACER Classic Version: Reading ≥ 76

ACCUPLACER Custom Version: Reading Diagnostic ≥ 69

Math

ACCUPLACER Classic/Custom Version: Elementary Algebra ≥ 92